

# 27.2 Removal and Installation of Parking Lock

W 3 A 040

## Tightening Torque in kpm

Hex. bolt for leaf spring of detent plate

1.0

### Removal

- 1 Remove rear transmission housing (27.2–500).
- 2 Remove centrifugal governor (27.2–520).
- 3 Screw fastening bolt from holder (14) and remove holder together with leaf spring (13) (Fig. 1).

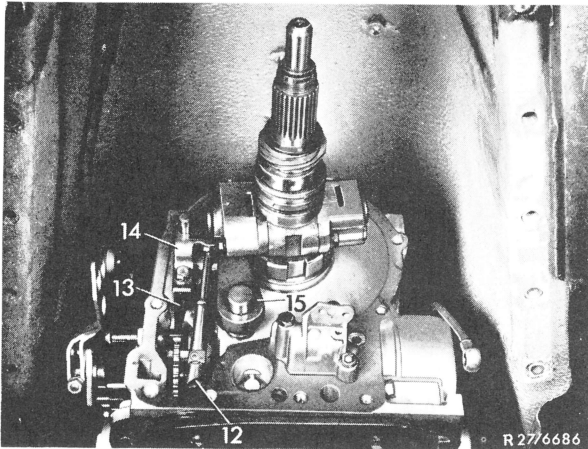


Fig. 1

- |                      |                      |
|----------------------|----------------------|
| 12 Resilient linkage | 14 Holder            |
| 13 Leaf spring       | 15 Parking lock pawl |

- 4 Remove resilient linkage (12).
- 5 Remove parking lock pawl (15) together with clamping spring.
- 6 Pull parking lock gear (21) from output shaft (Fig. 2).

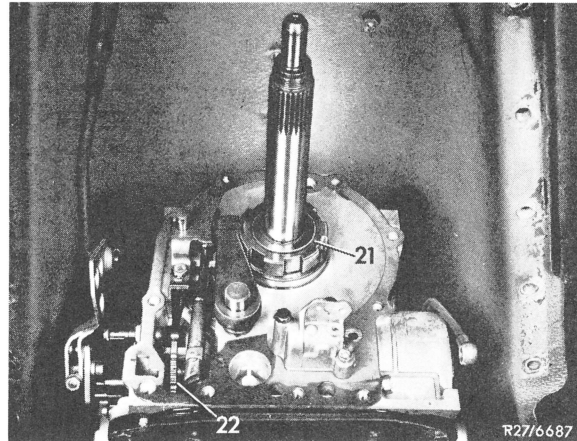


Fig. 2

- |                      |
|----------------------|
| 21 Parking lock gear |
| 22 Detent plate      |

### Installation

- 7 Attach parking lock gear (21) to output shaft (Fig. 2) and slide parking lock pawl (15) with clamping spring on bearing pin (Fig. 1).
- 8 Install resilient linkage (12) (Fig. 1).
- 9 Install leaf spring (13), needle bearing supported roller and holder (14) and tighten fastening bolt to 1.0 kpm.
- 10 Place range selector lever in position "P" by checking whether the parking lock engages correctly.
- 11 Install centrifugal governor (27.2–520).
- 12 Install rear transmission housing (27.2–500).